

In September 2014, the Austin community, with the generous support of the KDK-Harman Foundation, commissioned the E3 Alliance and the National Summer Learning Association (NSLA) to conduct a landscape assessment of summer learning programs in the greater metropolitan area. This report summarizes the key data points from that assessment.



Austin Metropolitan Area | 2014 Summer Learning Report Card

Summer Learning in the Austin Metropolitan Area

With a population of over 1.25 million, the Austin Metropolitan Area is the heart of the Central Texas economy.

Summer learning is crucial to the success of the Austin Metropolitan Area and Central Texas. Research shows that every summer low-income youth lose two to three months in reading achievement, while their higher income peers make slight gains. Most youth also lose about two months in math skills in the summer. Year after year, these losses add up. Without accessible, high-quality summer learning programs, the Austin community cannot close the achievement gap.

This report highlights the findings of a community assessment of Austin’s summer learning landscape. The assessment was designed to capture a snapshot of existing summer programs, funding streams, examples of quality practices, and systemic challenges to serving more of the community’s youth. This process offers the Austin community a chance to learn more about the range of available summer learning opportunities, as well as gaps in services and barriers to access. The information will enable the community to identify potential areas for collaboration around the summer learning space.



COMMUNITY DEMOGRAPHICS OF AUSTIN

Total 2010 City Population ¹	810,759
Percent of Persons below Poverty Level ¹	19.4%
Percent of Adults with at Least a High School Diploma ¹	86.1%
Percent of Adults with a Bachelor’s Degree or Higher ¹	44.8%
2014 Austin Independent School District (ISD) Student Enrollment ²	73,052
Approximate Percent of Austin ISD Students with Limited English Proficiency Status ²	27.0%
Approximate Percent of Austin ISD Students from Economically Disadvantaged Families ²	61.2%
Approximate Percent of Austin ISD Students Eligible for Free or Reduced Price Lunch ²	82.6%

¹ U.S. Census Bureau, *State and County Quick Facts for Austin, Texas*. ² *Austin ISD At A Glance*.

Summary of Findings

- In 2014, over 32,000 youth enrolled in summer programs in the Austin Metropolitan Area. Community-based organizations and the local Independent School Districts enrolled the greatest number of youth in summer programs, followed by national program providers.
- When weighted for enrollment, summer sites offered an average of more than 393 total hours of programming. Because many programs used a weekly camp structure in which youth could enroll for one or more weeks, the actual total number of hours any given youth participated is likely lower.
- NSLA and E3 received data on funding sources for a subset of 45 programs. More than 75% of these programs used private sources as part of their funding stream. The most common sources were program fees, followed by private foundation grants and individual giving.



IN TOTAL, E3 AND NSLA RECEIVED DATA FROM 60 ORGANIZATIONS OFFERING 64 SUMMER PROGRAMS AT OVER 110 SITES ACROSS THE METROPOLITAN AREA.

SUMMER LEARNING PROGRAMS IN AUSTIN

60
PARTICIPATING ORGANIZATIONS

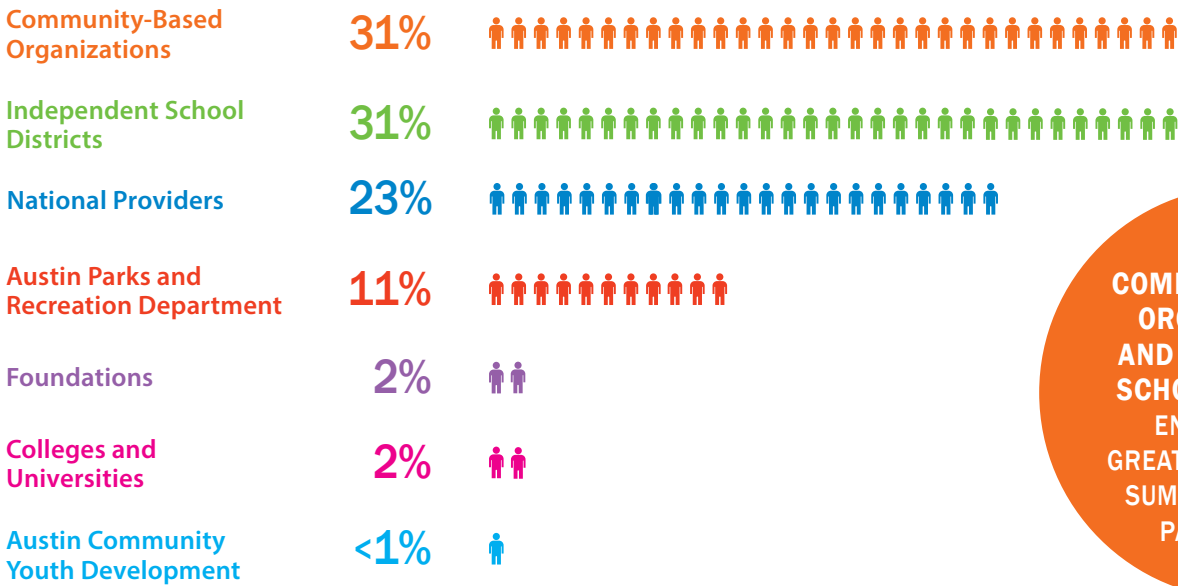
64
SUMMER PROGRAMS
(at 110 sites)

32,525
YOUTH ENROLLED

393
TOTAL HOURS OF PROGRAMMING
(weighted average)

Over 75%
OF SUMMER PROGRAM SITES OFFERED CONTENT FOCUSED ON ACADEMIC ENRICHMENT, HEALTH AND NUTRITION, OR SPORTS AND RECREATION

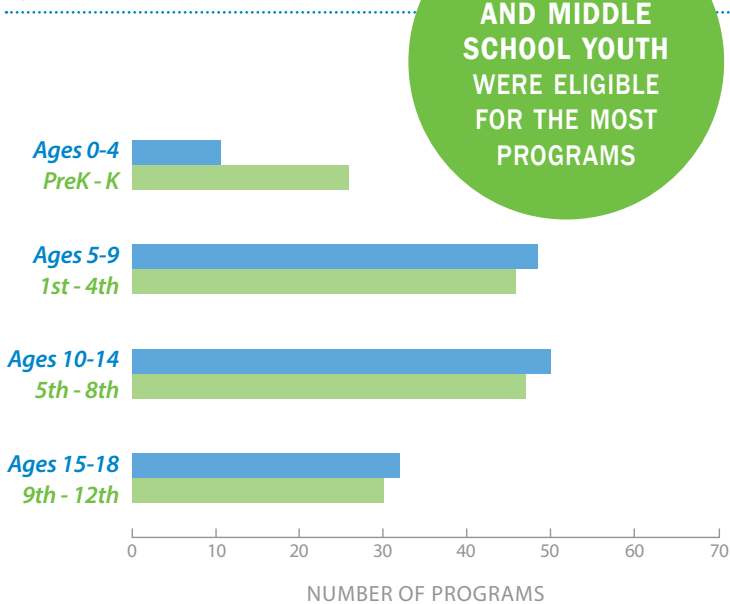
Youth Enrolled in a 2014 Summer Program by Sector



COMMUNITY-BASED ORGANIZATIONS AND INDEPENDENT SCHOOL DISTRICTS ENROLLED THE GREATEST NUMBER OF SUMMER PROGRAM PARTICIPANTS

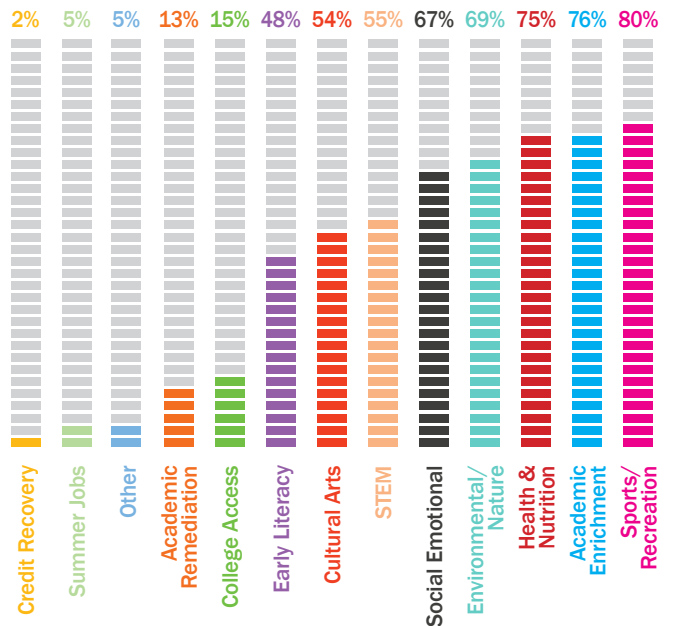
Eligibility for Programs

(by age and grade)



ELEMENTARY AND MIDDLE SCHOOL YOUTH WERE ELIGIBLE FOR THE MOST PROGRAMS


Program Content Areas





SUMMER LEARNING SYSTEM ASSESSMENT


NSLA has developed a three-phase approach to summer learning system building to help communities reach more youth with high-quality summer opportunities. Fundamentally, this approach is about fostering collaboration between local community organizations and institutions. During the community assessment process NSLA utilizes the *Community Indicators of Effective Summer Learning Systems* rating scale to assess the size, scope, and features of a summer learning system within six key domains.

The Austin community, led by the Central Texas Afterschool Network (CTAN) and the E3 Alliance (E3), is currently envisioning the future of out-of-school time in the area, including summer. Through the community assessment process, NSLA and E3 identified strong opportunities for an out-of-school time intermediary to support summer providers by managing the quality assessment, data management and marketing efforts across all programs.


 **Shared Vision and City-Wide Coordination**
Working together, E3 and CTAN have led partner organizations through a collaborative visioning process for summer and afterschool programs in the greater Austin area. This vision will inform the selection of an intermediary organization and the development of an action plan for out-of-school time (OST) system building in the community that includes summer.


 **Engaged Leadership**
Summer program providers are interested in educating district leadership on summer learning loss and increasing partnerships between the independent school districts and other providers in the Austin-area. Site leaders also believed that educating and engaging families as volunteers and advocates would allow them to reach more youth.

 **Data Management System**
Program leaders expressed strong interest in improving data collection and program evaluation methods. An intermediary organization should coordinate data collection and management across programs to improve and standardize evaluation methods in the greater Austin area. This intermediary must provide training and capacity building opportunities around data collection and analysis to support the wide variety of local summer program providers.

 **Continuous Quality Improvement**
Through community meetings, CTAN and E3 have begun the process of adopting the Texas Partnership for Out of School Time (TX POST) standards for quality afterschool, summer and expanded learning programs as Austin's standard. Establishing a clear community-wide commitment to quality standards positions the community well to increase program quality at scale in future years.

This community assessment identified a wide range of organizations offering summer programming. An intermediary should be selected that can provide quality assessment, data management, professional development and best practice sharing opportunities for program providers.

 **Sustainable Resources**
Limited funding is available to support capacity building, evaluation, and quality improvement for all summer program providers. Resources are necessary to expand these supports as the Austin community implements the TX POST standards and data management initiatives. Fundraising for these supports must be a core responsibility of the intermediary.

 **Marketing and Communications**
Summer program site leaders are interested in opportunities to cross-promote programs and market their particular offerings under a common message. A strong local example of this type of campaign is Missing School Matters by E3, which has leveraged partnerships with Yellow Cabs and local business leaders to help raise awareness.



**national summer
learning association**

About the National Summer Learning Association

The National Summer Learning Association (NSLA) is the only national nonprofit exclusively focused on closing the achievement gap by increasing access to high-quality summer learning opportunities. NSLA recognizes and disseminates what works, offers expertise and support for programs and communities, and advocates for summer learning as a solution for equity and excellence in education. NSLA's work is driven by the belief that all children and youth deserve high-quality summer learning experiences that will help them succeed in college, career, and life.

NSLA's Community Initiatives aim to align existing resources and to increase community capacity to deliver high-quality summer learning at scale. Designing strategies that are unique to the local context, NSLA's Community Initiatives support community assessment; partner coordination; strategic planning; and capacity building with local intermediaries and stakeholders.

www.summerlearning.org



About the E3 Alliance

The E3 Alliance (E3) is a regional, data-driven education collaborative based in Austin, Texas. E3 is helping to build the strongest educational pipeline in the country to drive regional economic prosperity. Founded in 2006, E3 Alliance acts as a catalyst for change, working to break-down barriers and build better alignment across the education continuum. The name tells the story: Education Equals Economics. E3 believes that only through greater educational achievement for current and future generations of children, can Central Texas realize economic prosperity and a high quality of life for our community. Such achievement requires systemic change from cradle to career, and that is our commitment to our community.

www.e3alliance.org



Special thanks to the KDK-Harman Foundation for their support of this initiative.

www.kdk-harman.org

 @summerlearning

 /SmarterSummers